

geotomographie

manufacturer of seismic borehole equipment

BIS-SH | S-Wave Source

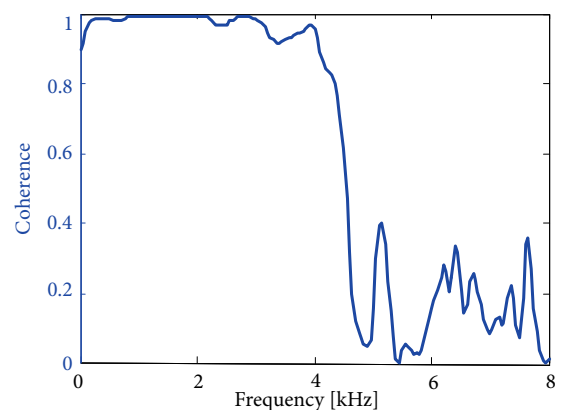
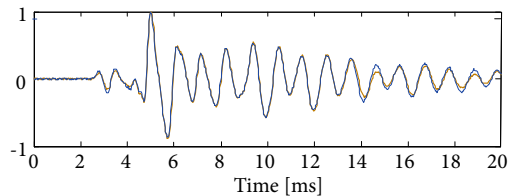
The borehole source BIS-SH generates horizontally polarized shear waves (SH) and compressional waves (P) in dry or water filled boreholes. The BIS-SH is used for crosshole testing and S-wave tomography.

Trigger Accuracy

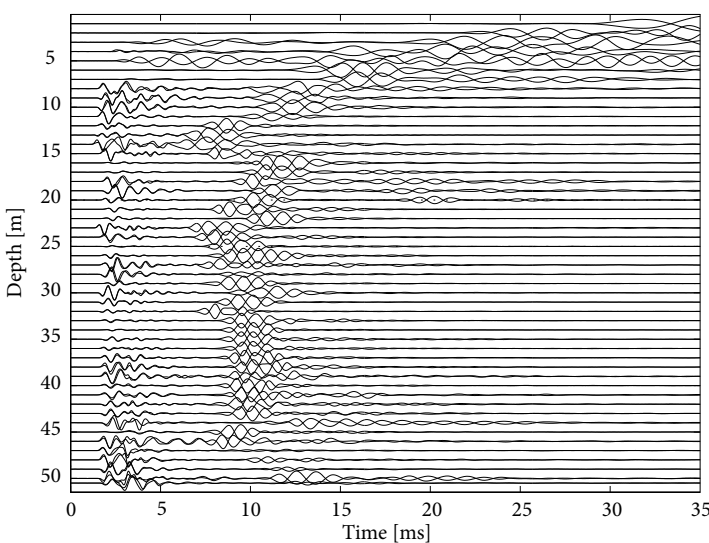
Mechanical impulses are released through manual or automatic triggering of the impulse generator (IPG5000) controlled by the remote control unit (RCU). The RCU converts the reference signal of the impulse generator to an accurate time break with an accuracy of a few microseconds.

Signal Repeatability and Frequency Response

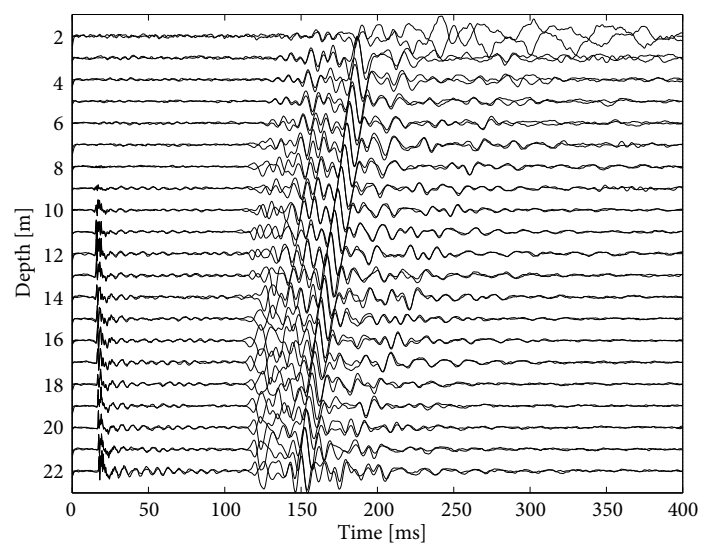
To estimate the source repeatability the calculation of the coherency spectra is used. Coherency values of „1“ indicate perfect repeatability whereas a coherency of „0“ expresses no repeatability. The test shows that the S-wave source BIS-SH is highly repeatable up to frequencies of 4-5 kHz.



Data Examples



Unconsolidated sediments
Borehole distance: 4 m



Unconsolidated sediments
Borehole distance: 25 m