

geotomographie

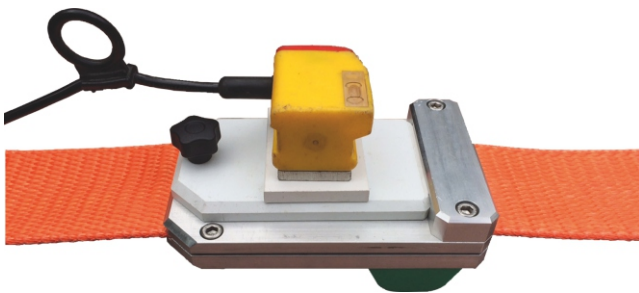
manufacturer of seismic borehole equipment



LS-24 | Landstreamer

The landstreamer LS-24 consists of a number of horizontally or vertically oriented sensors mounted on sledges connected with a belt. The streamer is used to record P-, S- or surface waves, especially if a large volume of seismic data has to be collected. Seismic surveying is often time consuming and expensive if geophones with spikes have to be planted into the ground. In particular, in urban areas with paved surface where planting geophones is often impossible the landstreamer is most suitable.

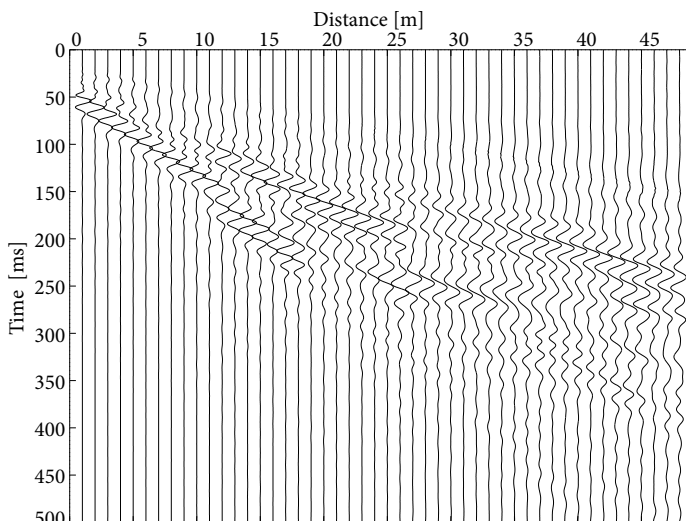
Landstreamers provide a fast and comparatively economical way to collect large volumes of data at close sensor spacings. The streamer belt can be hooked to a vehicle and moved along the profile. The landstreamer is suitable for MASW or reflection seismic applications especially on paved ground.



Streamer belt and base plate station with mounted horizontal sensor.

The GeoSym LS-24 landstreamer consists of a pulling belt with base plate stations. Station spacing can be easily arranged. Various geophone type from different manufacturers can be mounted to the base plate. Cables are protected by a cover closed by zip fastening, which prevents cables from abrasion or damages, or zipped to the belt directly.

Data Example



Technical Details

Design: Geosym GmbH

Natural sensor frequency: Geophones: 10 Hz (others on request), accelerometers: Flat from 0.2 Hz to 8000 Hz

Sensor arrangement: Vertical or horizontal

Sensor spacing: 1 m (others on request)