

SEISIMPACTER - Surface Impulse Source



SeisImpacter

The **SeisImpacter** is an electromagnetic driven source which can be used to generate seismic signals at the surface. It consists of the driver unit and a set of steel plates working as reaction mass. The source can be moved from shotpoint to shotpoint by means of a modified pushcart.

The **SeisImpacter** is powered by the impulse generator IPG 1000. Powerful seismic pulses with high consistency are released with a repetition rate variable between 4 sec and 8 sec.

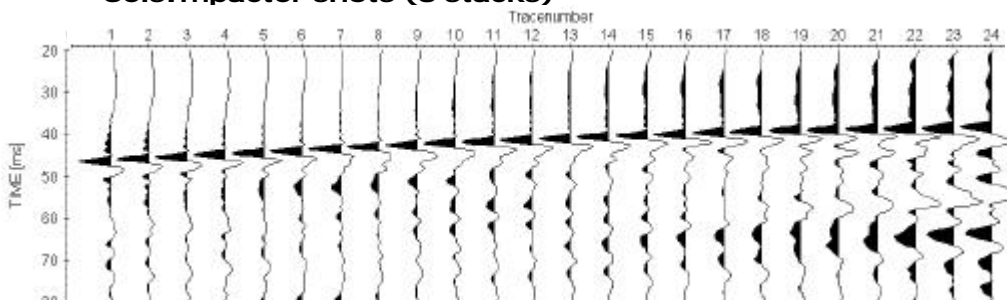


Moving the SeisImpacter

The **SeisImpacter** can be used for shallow refraction and reflection seismics as well as for MASW surveys (Multichannel Analysis of Surface Waves).

The **SeisImpacter** gives a highly defined and sharp seismic signal supporting a better identification of shallow reflection horizons. The source can be used as an add-on device to existing P-wave or SH-wave sparkers.

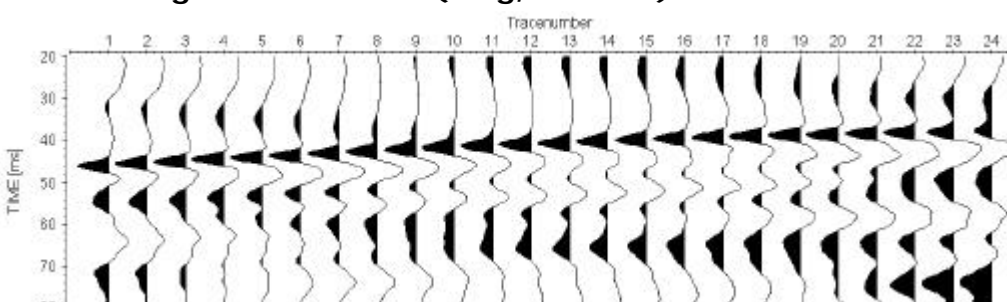
SeisImpacter shots (8 stacks)



Shown left are two shallow VSP records over unconsolidated soft ground.

The offset to the borehole was 20m and a 24Ch hydrophone string was placed 30 m deep.

Sledgehammer shots (5 Kg, 8 stacks)



As shown in this field example the signal frequency of the SeisImpacter is about two times higher compared to the standard seismic hammer testing. The amplitude of the SeisImpacter is about 40 - 50 % of the hammer shot.

SeisImpacter eight stacks shooting takes about 60 sec.